



## 2/4 Imperial Avenue Mount Waverley VIC

2 1 2

Boasting its own street frontage to Hillview Avenue is this single level residence that is on its own title with own driveway and no common property or owners corporation. Possessing these characteristics which are supremely hard to find, the low maintenance allotment is secure and private behind high fences and automatic gates.

Meticulously cared for; the well-designed floorplan commences via entrance and living area which flows through to the open plan family room and dining zone. Two generous bedrooms (both with built in robes) are highlighted by master with ensuite. The quality kitchen provides ample cupboard space with separate laundry creating further convenience. Outdoor areas include sizeable front and rear gardens with paved areas for entertaining and storage shed. Split system air conditioning, automatic front gates and carport parking for

**View :** <https://www.jacain.com.au/sale/vic/east/mount-waverley/residential/unit/7999280>

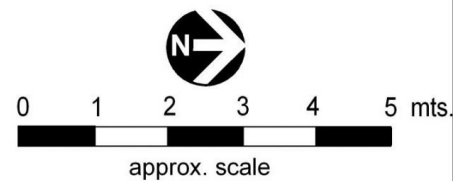
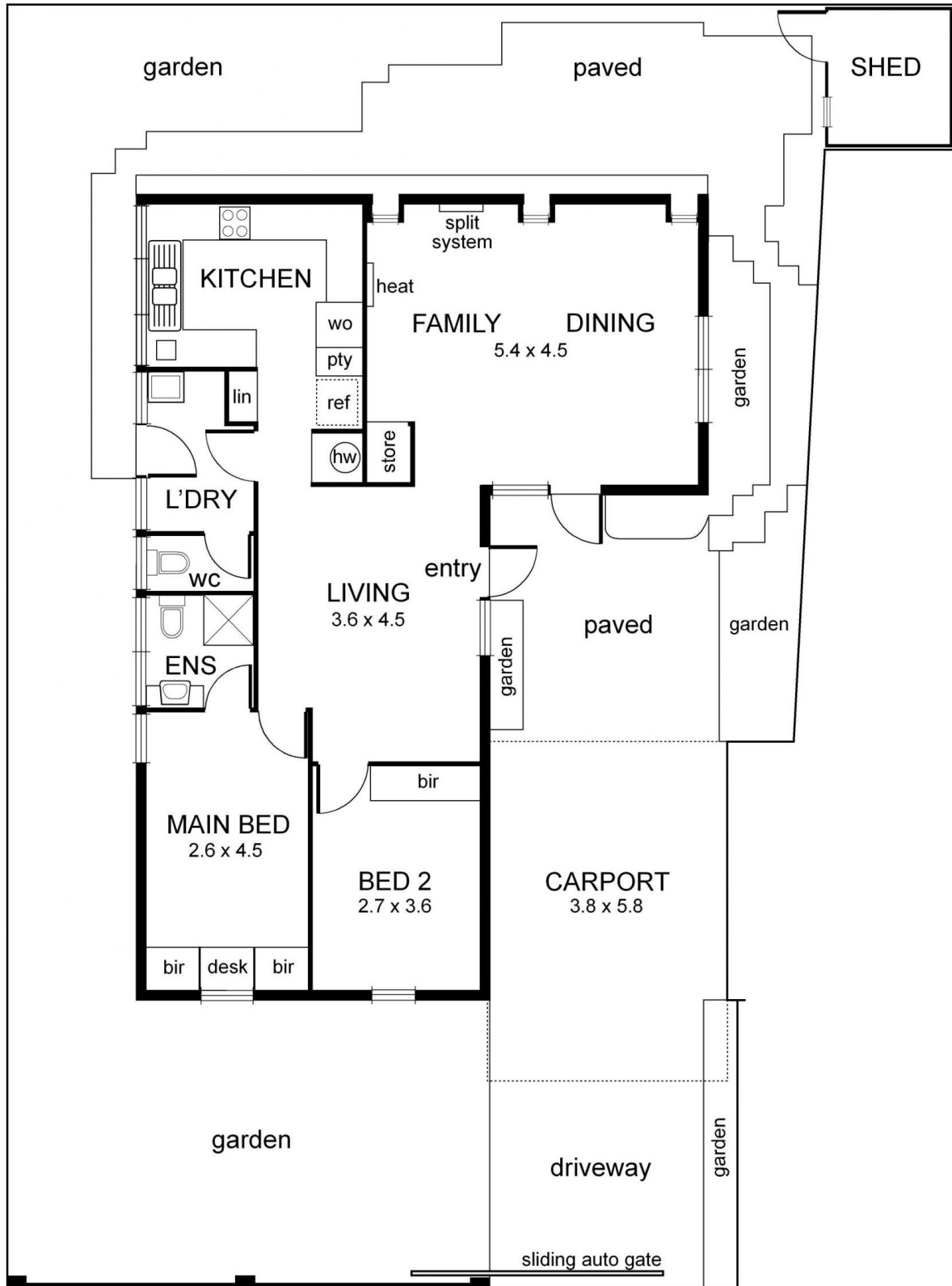


**Chris Cain**  
03 9805 2900



**Brendan Cain**  
03 9805 2900

# 2/4 Imperial Avenue Mount Waverley



NB: All possible care is taken with measurements however it should be assumed that they are approximate and are not definitive, and no liability will be accepted for any misinformation.  
This plan is a guide only, not a detailed specification