

JA CAIN



2/4 Hopetoun Avenue Canterbury VIC

3 **2** **3**

Possessing characteristics which are supremely hard to find, this stunning single level residence boasts a rear position on a deep block of only two homes plus a frontage and access from Daphne Street. These rare attributes and an expansive renovated floorplan have combined to produce a property seldom found, yet often sought after only moments from Maling Road.

Meticulously cared for and cleverly orientated to ensure all living areas face north, the formal lounge room opens onto the paved garden courtyard which receives an abundance of natural sunlight all year round. Open plan kitchen offers quality appliances, induction and gas cooking options, stone benches and plenty of cupboard space. Adjoining the modernised kitchen is the living and informal dining areas which also have easy access to outdoors. Three generous bedrooms are highlighted by master with walk in robe and

Price : \$ 1,840,000

View : <https://www.jacain.com.au/sale/vic/east/canterbury/residential/townhouse/7952570>



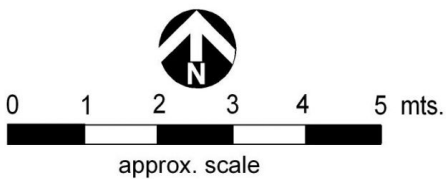
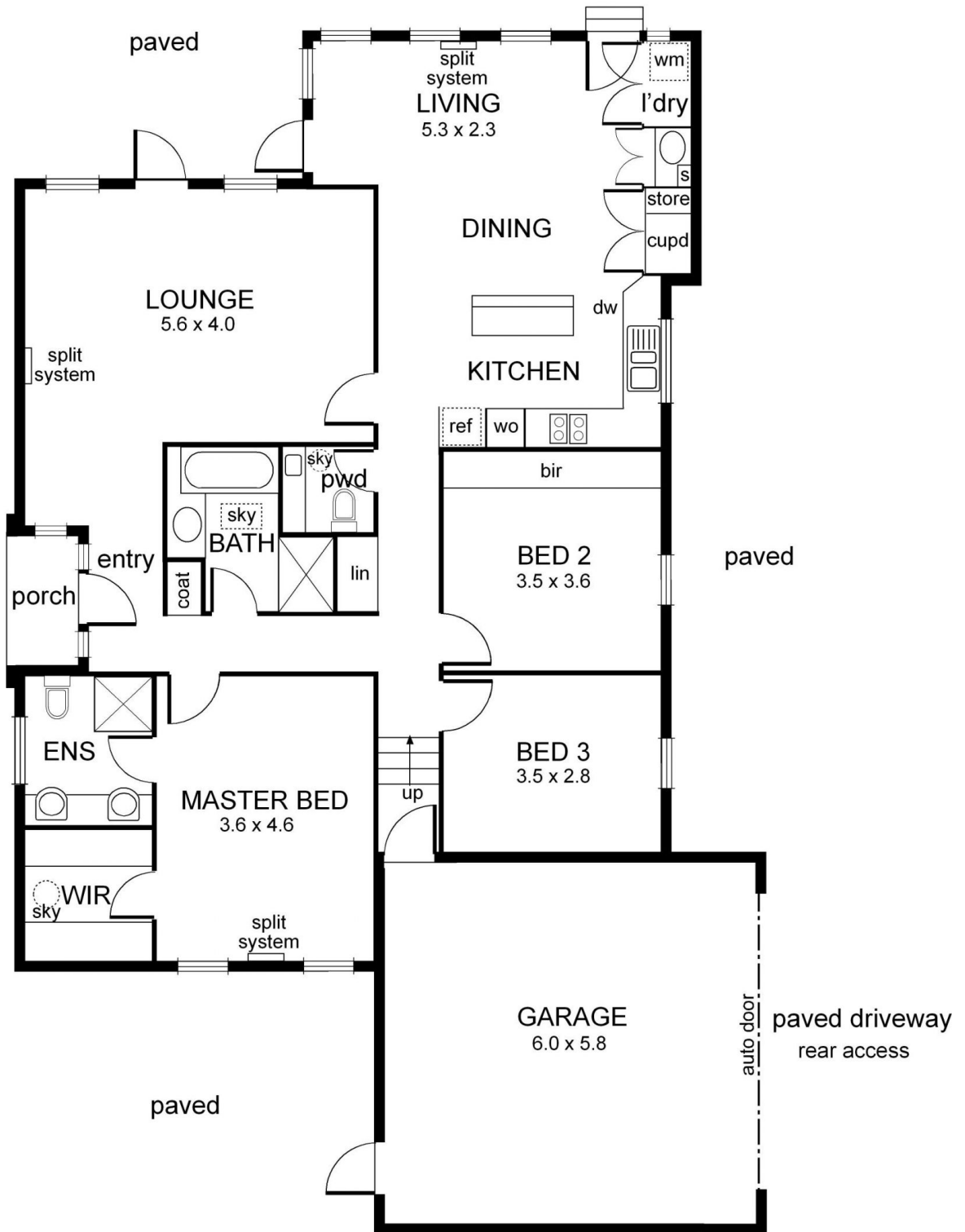
Chris Cain
03 9805 2900



Bryan Cain
03 9805 2900

<https://www.jacain.com.au>

2/4 Hopetoun Avenue Canterbury



NB: All possible care is taken with measurements however it should be assumed that they are approximate and are not definitive, and no liability will be accepted for any misinformation.

This plan is a guide only, not a detailed specification

Particulars herein are for information only and do not constitute representation by the Owner or Agent

2/4 Hopetoun Avenue Canterbury

