



**2/332 Riversdale Road Hawthorn East VIC**

1  1  1 

Situated on the desired north facing corner of this quality boutique complex, this oversized ground level residence enjoys delightful garden outlooks and is perfectly located for the ideal lifestyle.

**Price** : \$375,000 - \$395,000

**View** : <https://www.jacain.com.au/sale/vic/east/hawthorn-east/residential/apartment/7915295>

A simple walk to Camberwell Junction to enjoy shopping, cafes, restaurants, Rivoli cinema and much more plus only moments to parklands, schools and public transport for further accessibility.



**Brendan Cain**  
03 9805 2900

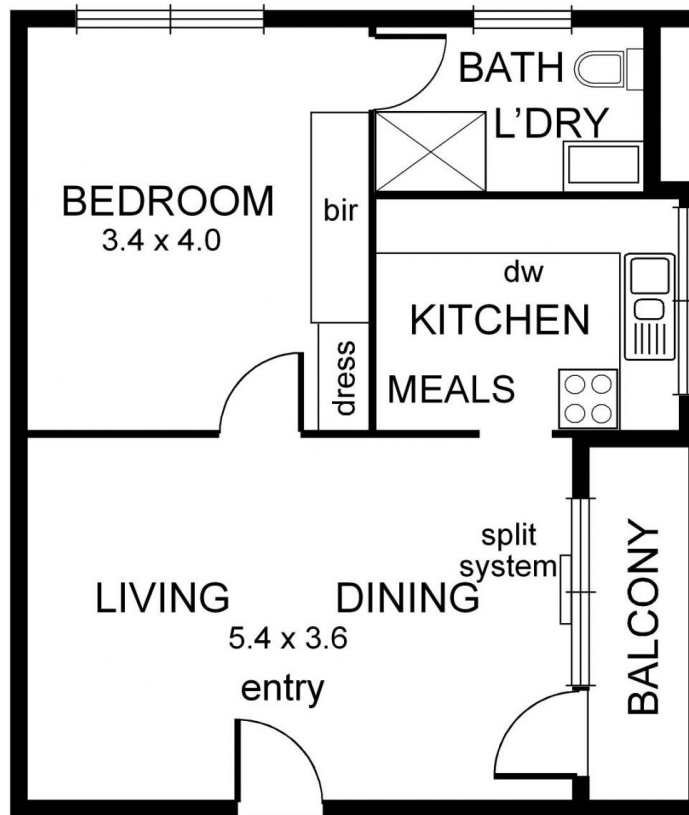


**Bryan Cain**  
03 9805 2900

The sizeable floorplan offers large double bedroom with huge built in robe which is serviced by modernised ensuite bathroom that includes laundry facilities.

Superbly updated kitchen is accompanied by lounge and dining room (plus split system air conditioning) which faces favourably to the north and opens onto private terrace which overlooks established gardens and trees.

# 2/332 Riversdale Road Hawthorn East



approx. scale

NB: All possible care is taken with measurements however it should be assumed that they are approximate and are not definitive, and no liability will be accepted for any misinformation.

This plan is a guide only, not a detailed specification