



29 Milverton Street Camberwell VIC

4  2  2 

Upholding the immensely desired attributes of a select era, this attractive Californian Bungalow is located in one of the premier streets of Camberwell and has been cherished by the same family for decades.

Possessing extensive period detail, the residence is sited on a deep allotment of approximately 696sqm with expansive front gardens and a coveted north facing rear.

Adorned with high decorative ceilings, leadlight windows and Baltic pine flooring, the plan commences through entrance hallway which opens into the formal lounge and over the foyer is the main bedroom with fire place and alluring bay window. Three further bedrooms (robes in one) and two separate bathroom plus additional laundry provide plenty of accommodation.

The gourmet kitchen offers ample bench and cupboard

Land Size : 696 sqm

View : <https://www.jacain.com.au/sale/vic/east/camberwell/residential/house/7838833>

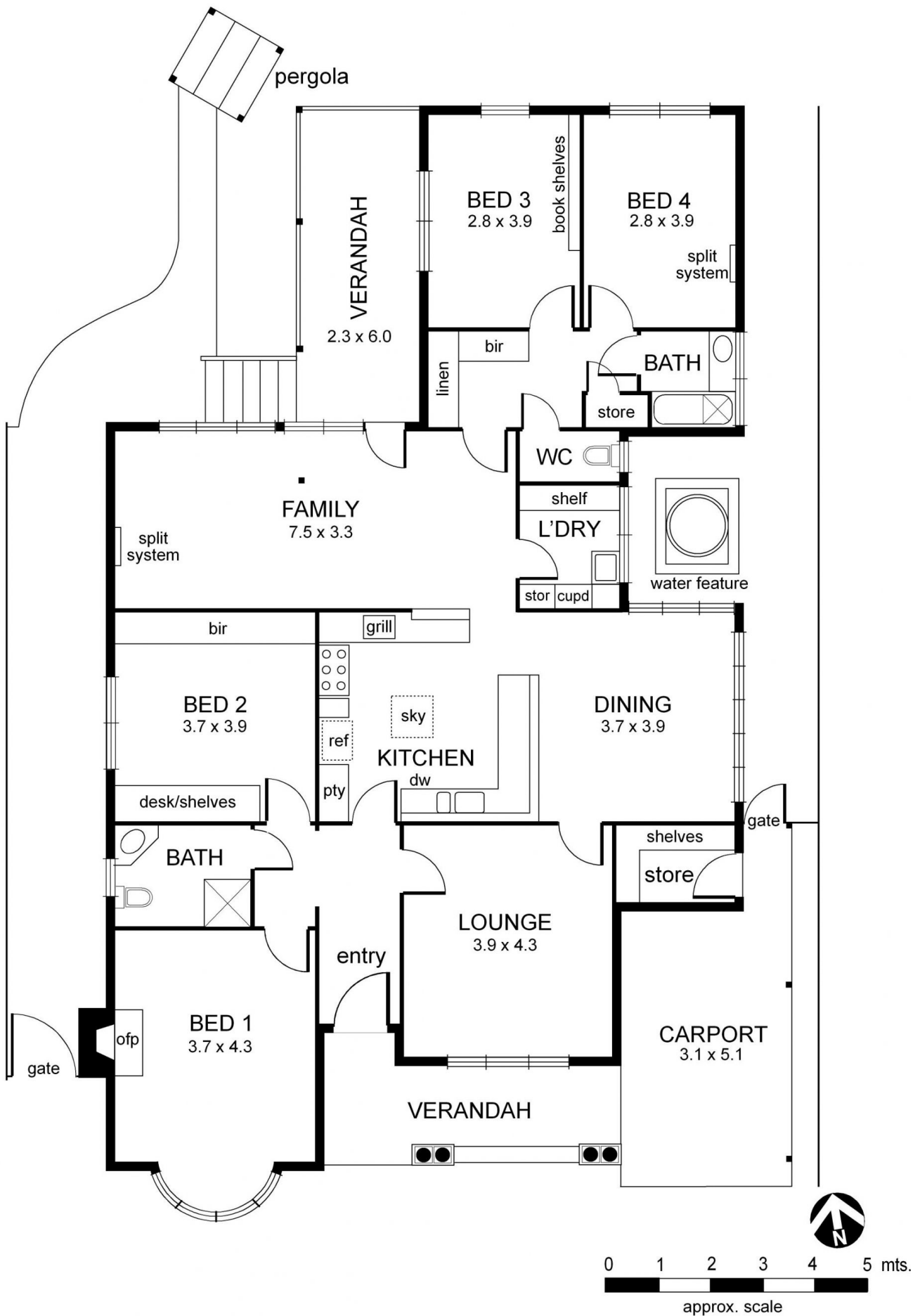


Chris Cain
03 9805 2900



Bryan Cain
03 9805 2900

29 Milverton Street Camberwell



NB: All possible care is taken with measurements however it should be assumed that they are approximate and are not definitive, and no liability will be accepted for any misinformation.

This plan is a guide only, not a detailed specification

Particulars herein are for information only and do not constitute representation by the Owner or Agent

29 Milverton Street Camberwell

