



**3/43 Clifton Road Hawthorn East VIC**

2 1 1

Impressive from the outset with its large rooms throughout, the property is further enhanced by an abundance of natural light, plenty of storage and quality finishes.

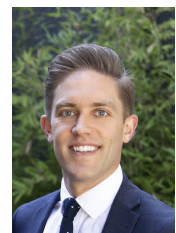
Huge open plan living/dining/kitchen is perfect for entertaining, two extremely spacious bedrooms with built in robes and modern central bathroom with shower and bath and separate two-way powder room and large laundry with rear courtyard access and automatic garage complete this impressive and expansive floorplan.

This imposing unit in an elite location is mere moments to an abundance of specialty shops and cafes on Burke Road, Camberwell Junction, Tooronga shopping Centre, HomeCo, nearby parklands such as the popular Anderson Park, Cato Park and Gardiners Creek Trail, as well as easy access to public transport (#72 Tram only 75m away and

**Land Size** : 174 sqm  
**View** : <https://www.jacain.com.au/sale/vic/east/hawthorn-east/residential/villa/7808640>

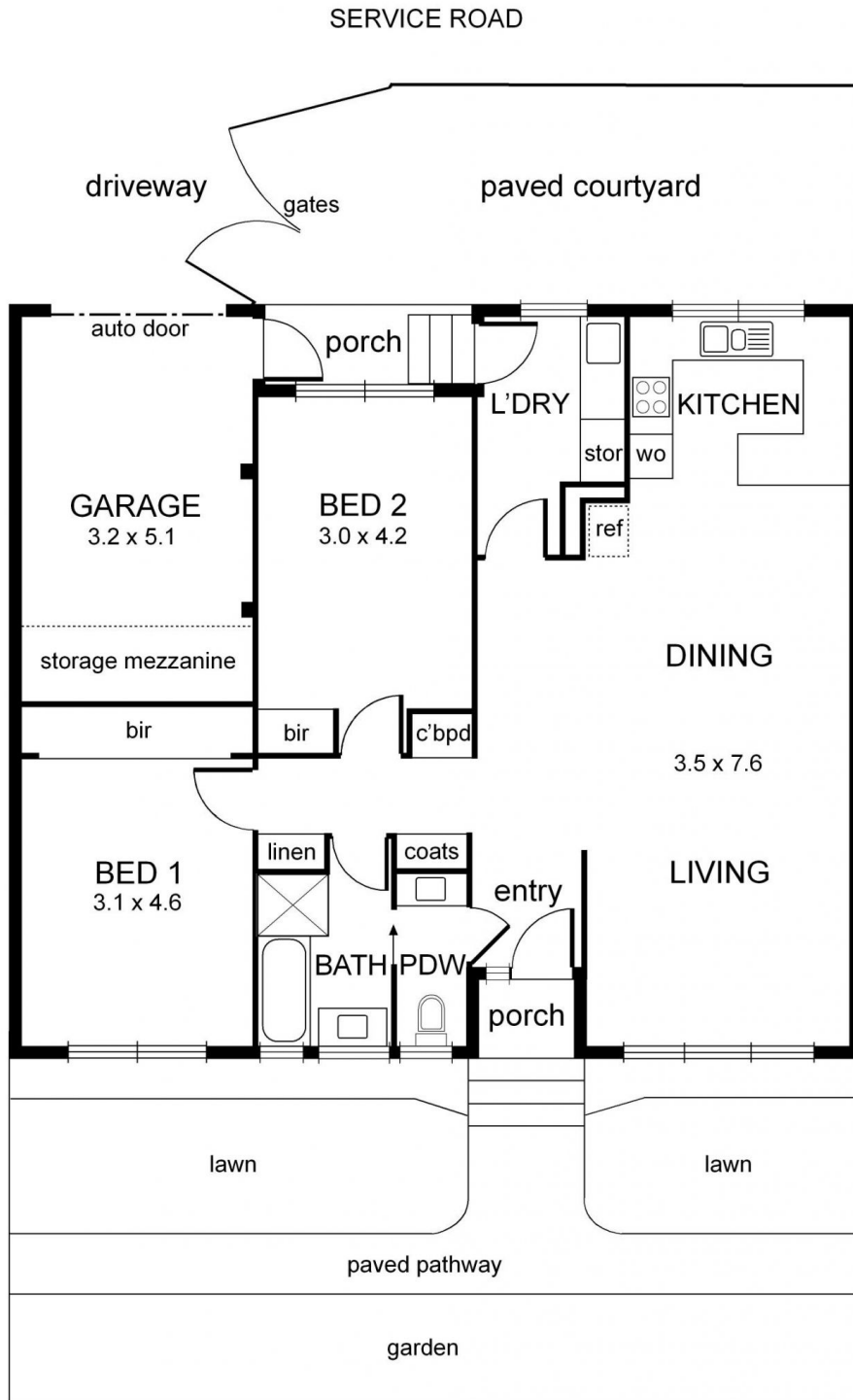


**Brendan Cain**  
03 9805 2900



**Chris Cain**  
03 9805 2900

# 3/43 Clifton Road Hawthorn East



0 1 2 3 4 5 mts.

approx. scale

NB: All possible care is taken with measurements however it should be assumed that they are approximate and are not definitive, and no liability will be accepted for any misinformation.

This plan is a guide only, not a detailed specification

Particulars herein are for information only and do not constitute representation by the Owner or Agent