



## 237 Highfield Road CAMBERWELL VIC

3  1 

6 room solid brick home on superb allotment in this highly desirable area with tram, train, shops (including new Leo's Supermarket opening soon) virtually at your doorstep.

**Type** : House

**View** : <https://www.jacain.com.au/sale/vic/east/camberwell/residential/house/7490803>

This is truly a great development site! (STCA)

LAND: 15.2m x 55.9m (50' x 183' 6") approx.



**Bryan Cain**  
03 9805 2900

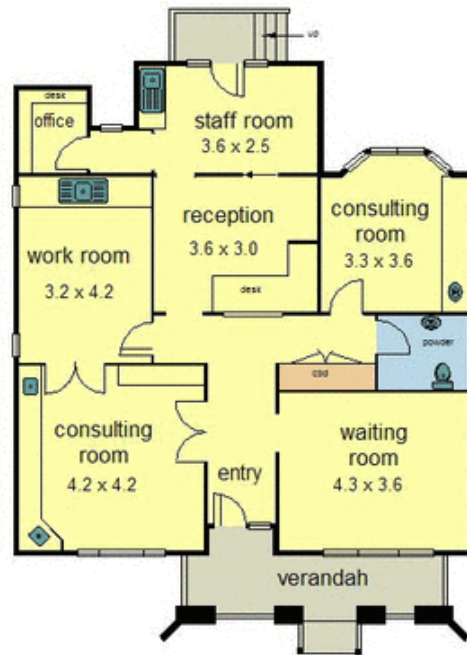


0 1 2 3 4

approx. scale (m)

This plan is a sketch, and all data shown is general only.

NB: All stated dimensions are approximate only & should not be taken as definite.



237 Highfield Road, Camberwell