



204 Wattle Valley Road CAMBERWELL VIC

3  1  1 

This classic solid brick on generous allotment of approx 673m2 offers huge appeal and potential in a highly-sought after area.

Comprises; entry, separate lounge and dining, kitchen opening onto meals, 3 bedrooms (main with b.i.r.) bathroom, laundry, ducted heating, single garage and a lovely rear sundeck.

With scope for extension or new development (STCA) and just a short stroll to trams, train, parks and shops this is an opportunity not to be missed.

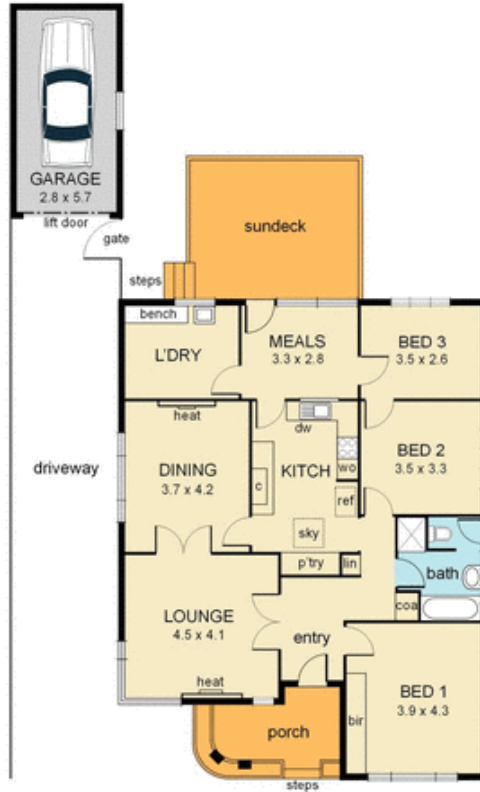
Type : House

View : <https://www.jacain.com.au/sale/vic/east/camberwell/residential/house/7490802>



Bryan Cain
03 9805 2900

204 Wattle Valley Road, Camberwell



0 1 2 3 4 5 mts.

approx. scale

NB: all stated dimensions are approximate only and should not be taken as definitive.